

RESOLUTION 02 - 64

**RESOLUTION CREATING
RURAL SPECIAL IMPROVEMENT MAINTENANCE DISTRICT # 689M
SADDLEBACK RIDGE ESTATES SUBDIVISION**

WHEREAS, a Petition signed by more than Sixty Percent (60%) of the Freeholders of the proposed district has been submitted to the Board of County Commissioners for creation of a rural improvement maintenance district for the maintenance of said streets; and,

WHEREAS, the boundaries of the proposed district is Lot 1 -19, Block 1; Lots 1 – 15, Block 2; and Lots 1-7, Block 3, of Saddleback Ridge Estates; and,

WHEREAS, all of the costs of the district shall be assessed on an "per lot" method for existing and future lots; and,

WHEREAS, the district shall be considered a district to exist perpetually unless included within another district providing the same services or assumed by a municipality; and,

WHEREAS, now is the date and time duly noticed and published as required by law for the Board of County Commissioners of Yellowstone County to hear and pass upon all protests that may be made against the making of said maintenance district; and,

WHEREAS, no protests have been delivered to the County Clerk since the duly published first notice of the passing of the Resolution of Intention; and,

WHEREAS, the Board of County Commissioners has acquired the jurisdiction to order the improvements pursuant to Section 7-12-2113, M.C.A.

NOW, THEREFORE, BE IT HEREBY RESOLVED, that the Board of County Commissioners of Yellowstone County, Montana, deeming the public interest or convenience require, and having acquired jurisdiction, hereby creates the following Rural Special Improvement Maintenance District:

1. NUMBER OF DISTRICT

Said Rural Special Improvement District shall be designated as District No. 689M.

2. DESCRIPTION OF DISTRICT

The district is described by the exterior boundaries of the following described real property: Lots 1 - 19, Block 1; Lots 1-15, Block 2; and Lots 1-7, Block 3 of Saddleback Ridge Estates; and

3. DESCRIPTION OF IMPROVEMENTS, DESCRIPTION OF MAINTENANCE, METHOD OF ASSESSMENT, AND ESTIMATED COSTS.

Assessments collected on behalf of this district shall be used for the maintenance, preservation, and repair of the streets located within the boundaries of this


district. All of the costs of the district shall be assessed equally on a per lot method for existing and future lots. Estimated costs are shown in Exhibit C. but costs shown are not exclusive of other eligible street expenditures.

4. DURATION

The district shall be deemed to be perpetual in nature unless absorbed and replaced by another district or municipality.

DONE BY ORDER of the Board of County Commissioners, Yellowstone County, Montana, this 13th day of August, 2002.

BOARD OF COUNTY COMMISSIONERS
YELLOWSTONE COUNTY, MONTANA


Jim Reno, Chairman


James A. Ziegler, Sr. Member


Bill Kennedy, Member - CHAIR

(SEAL)
ATTEST:

Tony Nave, Clerk and Recorder
Yellowstone County, Montana

EXHIBIT

RSID 689M EX 1

SADDLEBACK RIDGE ESTATES
LOCATED IN THE S1/2 OF SECTION 6, T. 2 S.,



SCALE: 1"=300'

CERTIFICATE OF SURVEY NO.

TRACT 1-A

GOVT LOT 6

UNPLATTED

GOVT LOT 7

UNPLATTED

WEST

AVE.

(27th

ROAD

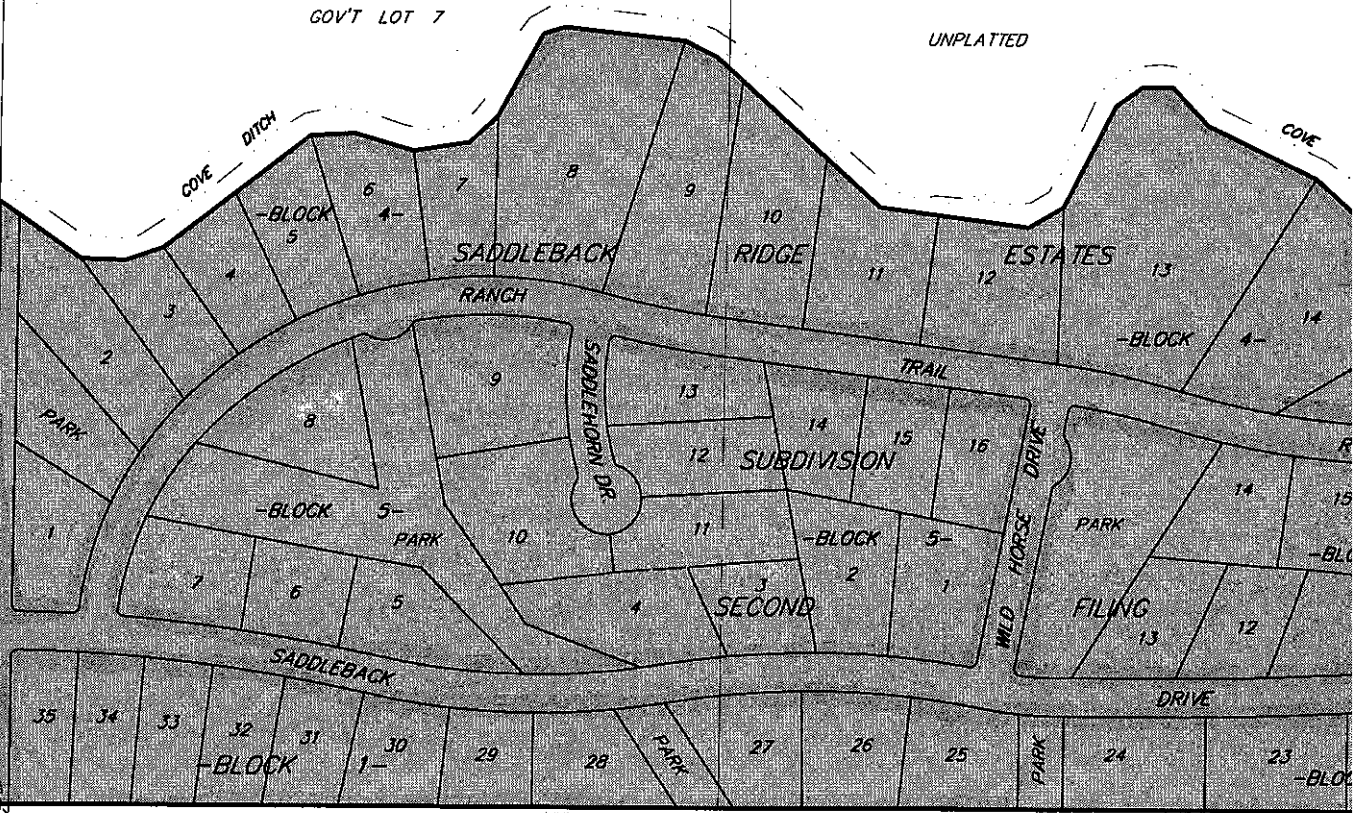
UNPLATTED

UNPLATTED

WOLD

COVE DITCH

COVE



SW COR. SECT. 6,
T2S, R24E, P4M
FOUND 1" PIPE

P:\CADD\LDD3-SURV-PROJ\04006 Saddleback_Ridge_Sub_2nd_Fig_SV.dwg\RSID EXHIBIT.dwg, 5/26/2005 3:36:51 PM, Mike, 1:1

CE